

26, 666 Goddard Ave NE



FOR LEASE

Property Features

Size: 3,750 sq.ft.
Office: 540 sq.ft.
Warehouse: 3,210 sq.ft.
Mezzanine: 540 sq.ft. (Bonus)

Loading: 1 Drive In (12' x 14')
Power: 100 Amp (TBV)
Ceiling: 15' 8" Clear

Asking Rate: Market
Op Costs: \$4.50/sq.ft.

Location: Strategically located with a mix of industrial and community amenities offering connectivity and convenience.
Easy access to major routes such as: McKnight Blvd, Deerfoot Trail, Edmonton Trail, and Centre Street.



CMS Real Estate Ltd.

#200, 136- 17 Ave NE Calgary, AB T2E 1L6
403-291-0425 www.cmsrealestateltd.com

Gerry Macdonald - Broker, CCIM
403-291-0425
gmac@cmsrealestateltd.com

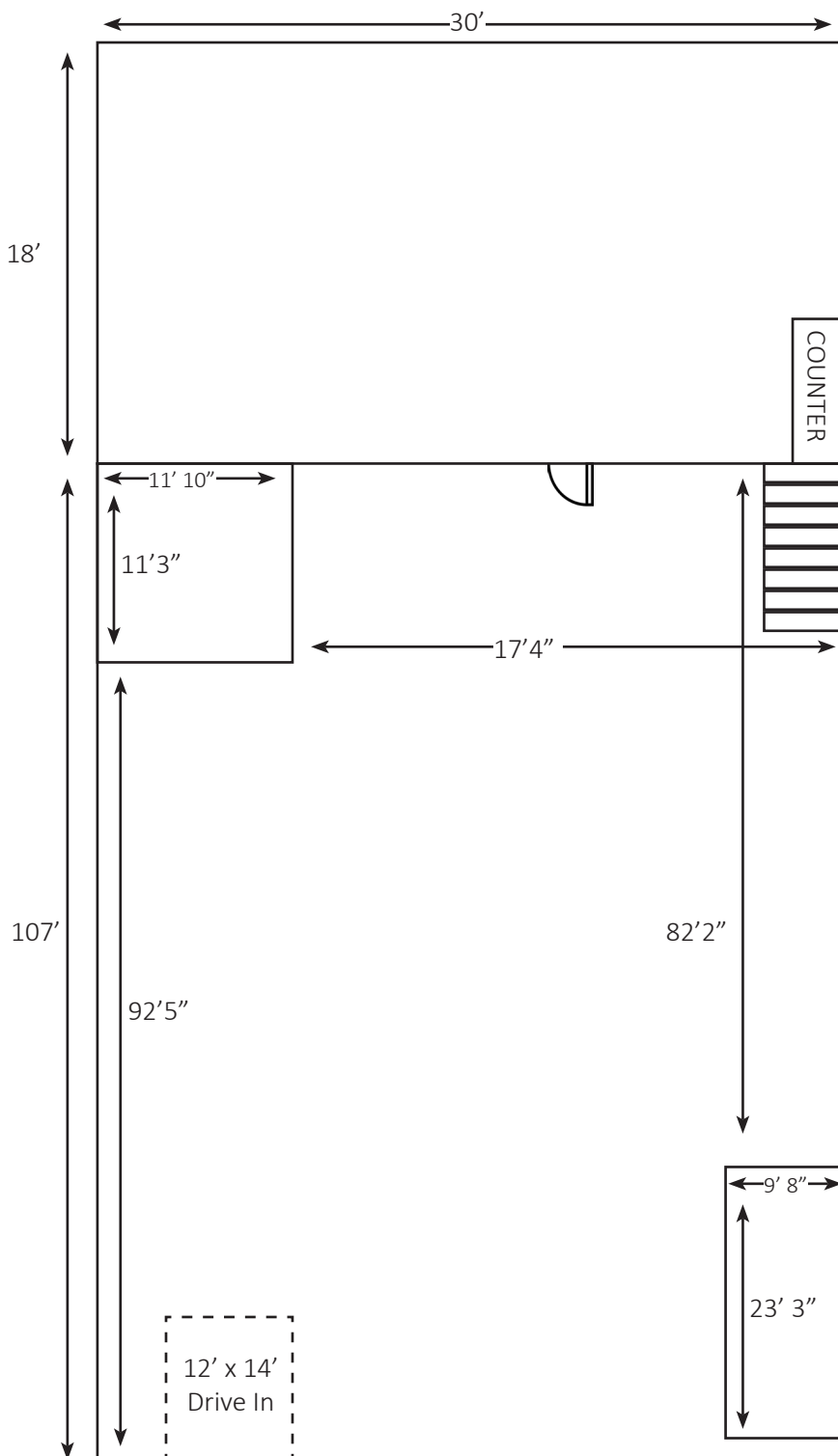
Gerry Macdonald Jr. - Associate Broker
403-219-0161
gmr@cmsrealestateltd.com

Jessica Macdonald - Associate
403-219-0155
jessica@cmsrealestateltd.com

"The information contained herein is believed to be true but does not form part of any future contract. The property is subject to sale, withdrawal or price change without notice." The information contained herein is based upon the information furnished by the principal sources, which we deem reliable - for which we cannot assume responsibility, but which we believe to be correct.

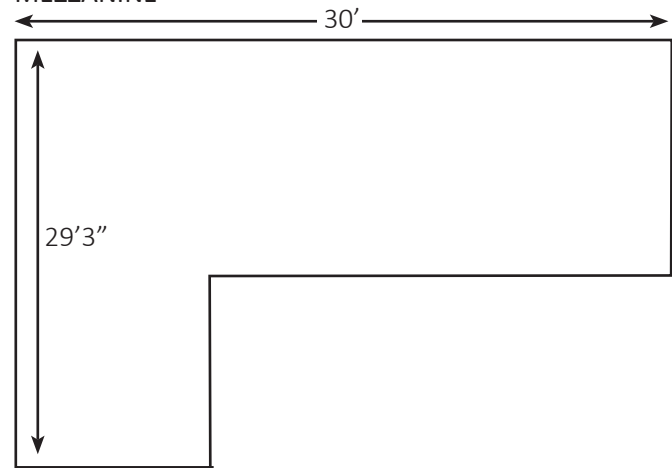
FLOOR PLAN

26, 666 Goddard Ave NE



* Floor plan is not to scale

MEZZANINE



CMS Real Estate Ltd.

#200, 136- 17 Ave NE Calgary, AB T2E 1L6

403-291-0425 www.cmsrealestateltd.com

Gerry Macdonald - Broker, CCIM

403-291-0425

gm@cmsrealestateltd.com

Gerry Macdonald Jr. - Associate Broker

403-219-0161

gmjr@cmsrealestateltd.com

Jessica Macdonald - Associate

403-219-0155

jessica@cmsrealestateltd.com

"The information contained herein is believed to be true but does not form part of any future contract. The property is subject to sale, withdrawal or price change without notice." The information contained herein is based upon the information furnished by the principal sources, which we deem reliable - for which we cannot assume responsibility, but which we believe to be correct.