

1220 10th Ave SE

**BEAUTIFUL CHARACTER
OFFICE SPACE LOCATED IN THE
HEART OF INGLEWOOD**

**WALKING DISTANCE TO
RESTAURANTS AND AMENITIES**

**ONSITE PARKING WITH
ADDITIONAL STREET AND LOT
PARKING NEARBY**



FOR SALE



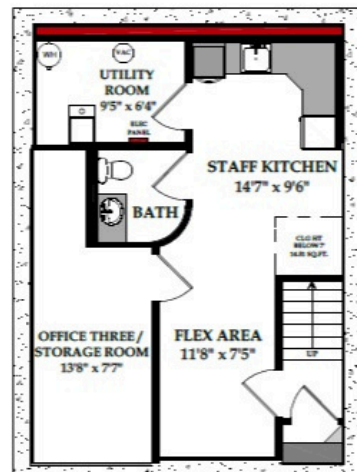
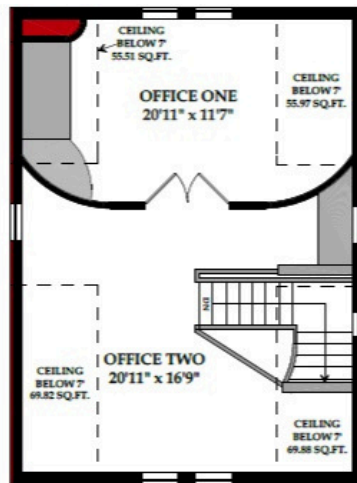
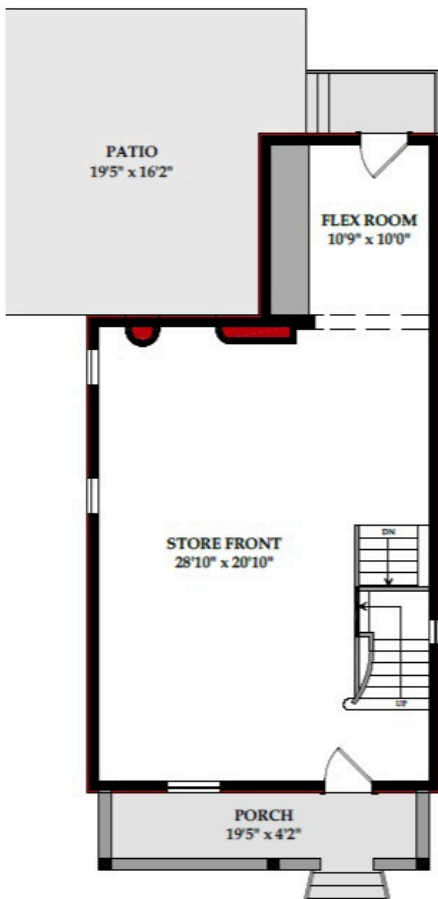
TOTAL SIZE:	2,158 SQ.FT.
MAIN FLOOR:	813 SQ.FT.
SECOND FLOOR:	680 SQ.FT.
LOWER LEVEL:	665 SQ.FT.
ZONING:	C-COR2
TAXES:	\$13,635.17

*MEASUREMENTS BASED ON BOMA STANDARDS

ASKING PRICE: \$1,059,000



GERRY MACDONALD JR.
ASSOCIATE BROKER
403-219-0161
GMJR@CMSREALESTATELTD.COM



#200, 136 17TH AVENUE NE
CALGARY, AB T2E 1L6

CONTACT US: 403-291-0425
GERRY MACDONALD JR.
GMJR@CMSREALESTATELTD.COM



WWW.CMSREALESTATELTD.COM

"THE INFORMATION CONTAINED HEREIN IS BELIEVED TO BE TRUE BUT DOES NOT FORM PART OF ANY FUTURE CONTRACT. THE PROPERTY IS SUBJECT TO SALE, WITHDRAWAL OR PRICE CHANGE WITHOUT NOTICE." THE INFORMATION CONTAINED HEREIN IS BASED UPON THE INFORMATION FURNISHED BY THE PRINCIPAL SOURCES, WHICH WE DEEM RELIABLE - FOR WHICH WE CANNOT ASSUME RESPONSIBILITY, BUT WHICH WE BELIEVE TO BE CORRECT.