

# 315B 19 Street SE



## FOR LEASE

Turn Key Restaurant

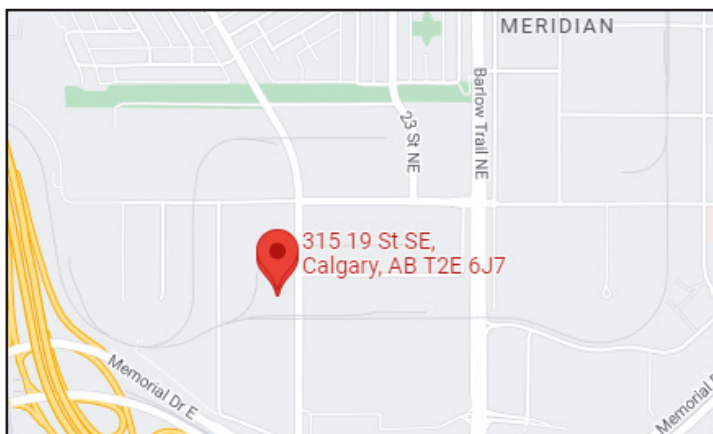
### Property Features

**Size:** 1,493 sq.ft.

**Asking Rate:** Market

**Op Costs:** TBV

**Location:** Mayland- Easy access to major routes such as: Deerfoot Trail, Memorial Drive, Barlow Trail, and 16th Avenue.



### CMS Real Estate Ltd.

#200, 136- 17 Ave NE Calgary, AB T2E 1L6

403-291-0425 [www.cmsrealestateltd.com](http://www.cmsrealestateltd.com)

**Gerry Macdonald - Broker, CCIM**

403-291-0425

[gm@cmsrealestateltd.com](mailto:gm@cmsrealestateltd.com)

**Gerry Macdonald Jr. - Associate Broker**

403-219-0161

[gmmjr@cmsrealestateltd.com](mailto:gmmjr@cmsrealestateltd.com)

**Jessica Macdonald - Associate**

403-219-0155

[jessica@cmsrealestateltd.com](mailto:jessica@cmsrealestateltd.com)

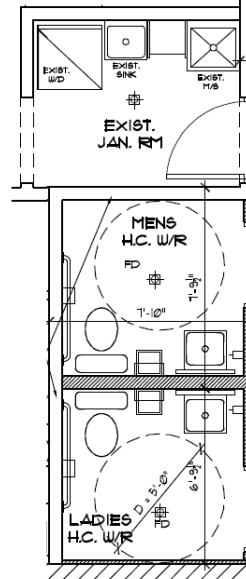
"The information contained herein is believed to be true but does not form part of any future contract. The property is subject to sale, withdrawal or price change without notice."

The information contained herein is based upon the information furnished by the principal sources, which we deem reliable - for which we cannot assume responsibility, but which we believe to be correct.

## FLOOR PLAN



\*JERSEY'S NOT INCLUDED\*



## CMS Real Estate Ltd.

#200, 136- 17 Ave NE Calgary, AB T2E 1L6

403-291-0425 www.cmsrealestateltd.com

Gerry Macdonald - Broker, CCIM

403-291-0425

gm@cmsrealestateltd.com

Gerry Macdonald Jr. - Associate Broker

403-219-0161

gmjr@cmsrealestateltd.com

Jessica Macdonald - Associate

403-219-0155

jessica@cmsrealestateltd.com

"The information contained herein is believed to be true but does not form part of any future contract. The property is subject to sale, withdrawal or price change without notice."

The information contained herein is based upon the information furnished by the principal sources, which we deem reliable - for which we cannot assume responsibility, but which we believe to be correct.