

INDUSTRIAL BUILDING FOR SALE

88 SKYLINE CRESCENT NE



PROPERTY DETAILS

District: Skyline West (Greenview)
Total Area: 5,600 sq. ft.
Shop: 4,000 sq. ft.
Office: 800 sq. ft.
Mezzanine: 800 sq. ft.
Lot Size: 8,891 sq. ft.
Yard: 2,900 sq. ft.
Parking: 4 - Front
Loading: 1 - 10' x 12' OH Drive-in door
Power: 400 Amps

Property Taxes: \$19,752.38 (2021)
Zoning: I-R
Year Built: 1981
Possession: 90 days

COMMENTS

- Ideal for an Owner/User
- Great access to McKnight Blvd, Deerfoot Trail and Stoney Trail
- Visible from Deerfoot Trail
- Concrete block construction

ASKING PRICE: \$1,295,000 (\$231.25/SF)

For further information, please contact:



Julie Stefan
Associate
Direct: (403) 804-1399
jstefan@royallepage.ca

John Hamilton
Associate
Direct: (403) 815-9041
hamilton.jw@hotmail.com

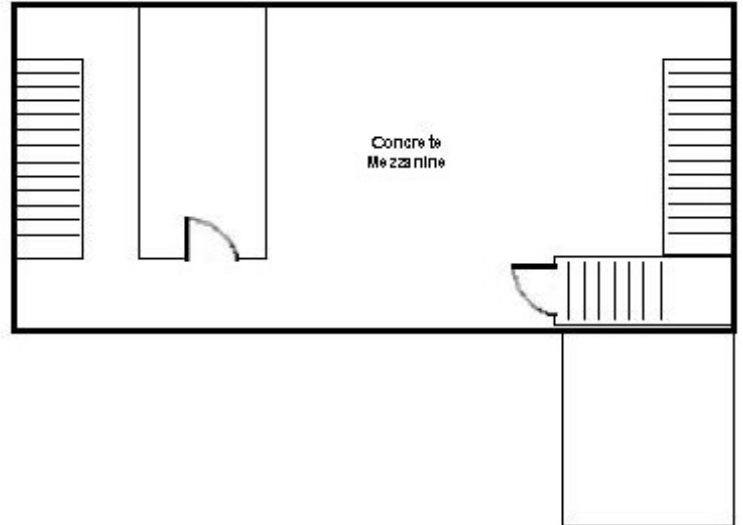
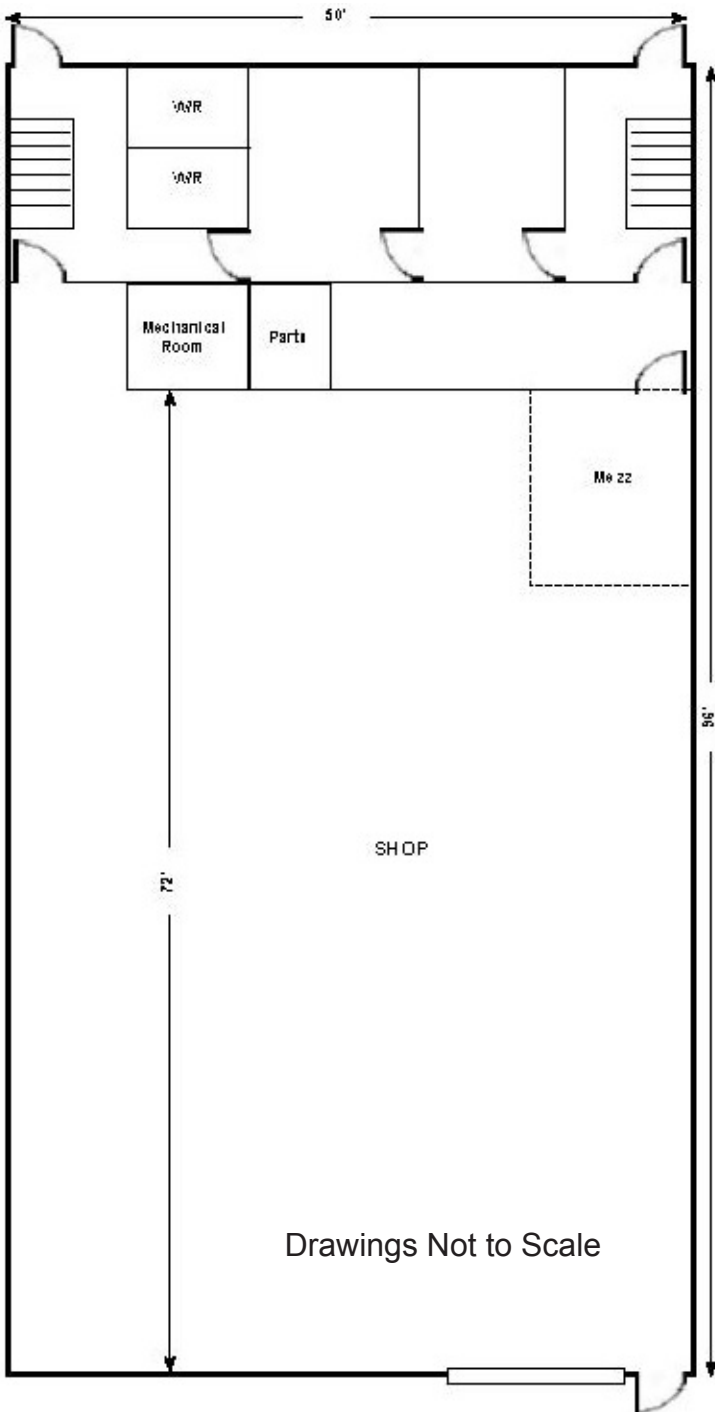


Royal LePage Solutions - Commercial Division #205, 264 Midpark Way SE Calgary, AB T2X 1J6

Not intended to solicit any party under a relevant contract. The information above is derived from sources believed reliable; however, no warranties or representations are being made regarding such information, including the potential income, costs, or profits associated with a property. Interested parties should consult a qualified professional for investment, financial or tax advice. All offices are independently owned and operated, except those offices marked as "Royal LePage Real Estate Services Ltd." Royal LePage is a registered trade-mark used under license. © 2012 Brookfield Real Estate Services Manager Limited

INDUSTRIAL BUILDING FOR SALE

88 SKYLINE CRESCENT NE



For further information, please contact:



Julie Stefan
Associate
Direct: (403) 804-1399
jstefan@royallepage.ca

John Hamilton
Associate
Direct: (403) 815-9041
hamilton.jw@hotmail.com

