

# INDUSTRIAL PROPERTY FOR SALE

4002 - 44 AVENUE, STETTLER, AB



## PROPERTY DETAILS

### Building Sizes:

Office: 2,760 sq. ft.

Shop: 800 sq. ft.

Shed: 1,240 sq. ft.

**Yard:** 1.08 Acres.

**Power:** 200 Amps to Shop & Office

**Property Taxes:** \$7,018.99 (2021)

**Zoning:** Industrial

**Year Built:** Office - 1981; Shop - 1991

## COMMENTS

- Ideal for an Owner/User
- Highway 12 frontage

**ASKING PRICE: \$438,000**

For further information, please contact:



**Julie Stefan**  
Associate  
Direct: (403) 804-1399  
jstefan@royallepage.ca

**John Hamilton**  
Associate  
Direct: (403) 815-9041  
hamilton.jw@hotmail.com

**CMS Real Estate Ltd.**



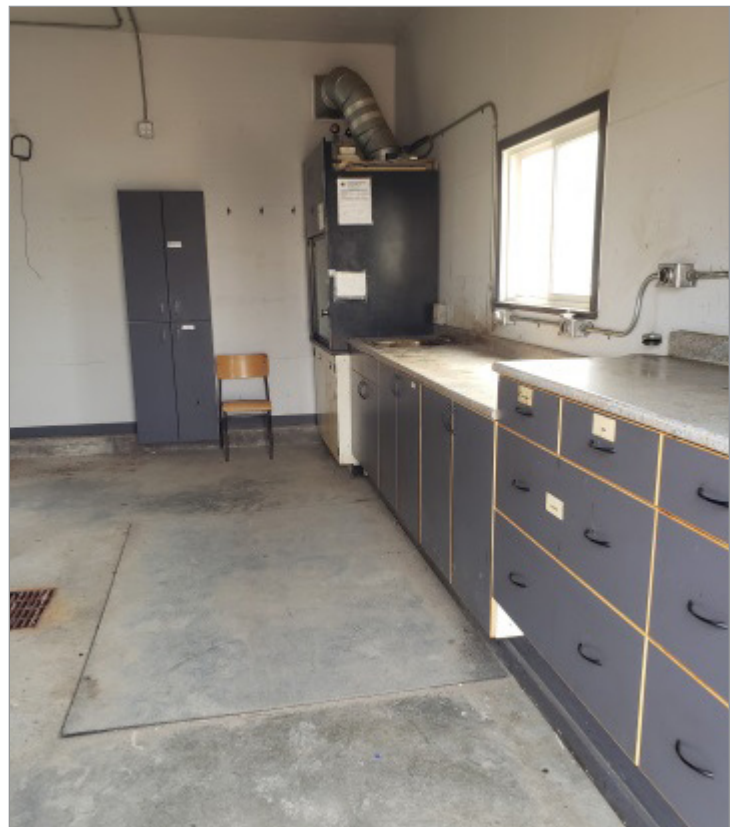
**Royal LePage Solutions - Commercial Division #205, 264 Midpark Way SE Calgary, AB T2X 1J6**

Not intended to solicit any party under a relevant contract. The information above is derived from sources believed reliable; however, no warranties or representations are being made regarding such information, including the potential income, costs, or profits associated with a property. Interested parties should consult a qualified professional for investment, financial or tax advice. All offices are independently owned and operated, except those offices marked as "Royal LePage Real Estate Services Ltd." Royal LePage is a registered trade-mark used under license. © 2012 Brookfield Real Estate Services Manager Limited

**INDUSTRIAL PROPERTY  
FOR SALE**

**4002 - 44 AVENUE, STETTLER, AB**

**ROYAL LEPAGE  
COMMERCIAL**





**4002 - 44 AVENUE, STETTLER, AB**



ROYAL LEPAGE  
COMMERCIAL

