

INDUSTRIAL PROPERTY FOR SALE

4002 - 44 AVENUE, STETTLER, AB



PROPERTY DETAILS

Building Sizes:

Office: 2,760 sq. ft.

Shop: 2,500 sq. ft.

Lab/Shed: 640 sq. ft.

Yard: 1.08 Acres.

Power: 200 Amps to Shop & Office

Property Taxes: \$7,018.99 (2021)

Zoning: Industrial

Year Built: Office - 1981; Shop - 1991



COMMENTS

- Ideal for an Owner/User
- Highway 12 frontage

ASKING PRICE: \$398,000

For further information, please contact:



Julie Stefan
Associate
Direct: (403) 804-1399
jstefan@royallepage.ca

John Hamilton
Associate
Direct: (403) 815-9041
hamilton.calgary49@gmail.com

CMS Real Estate Ltd.



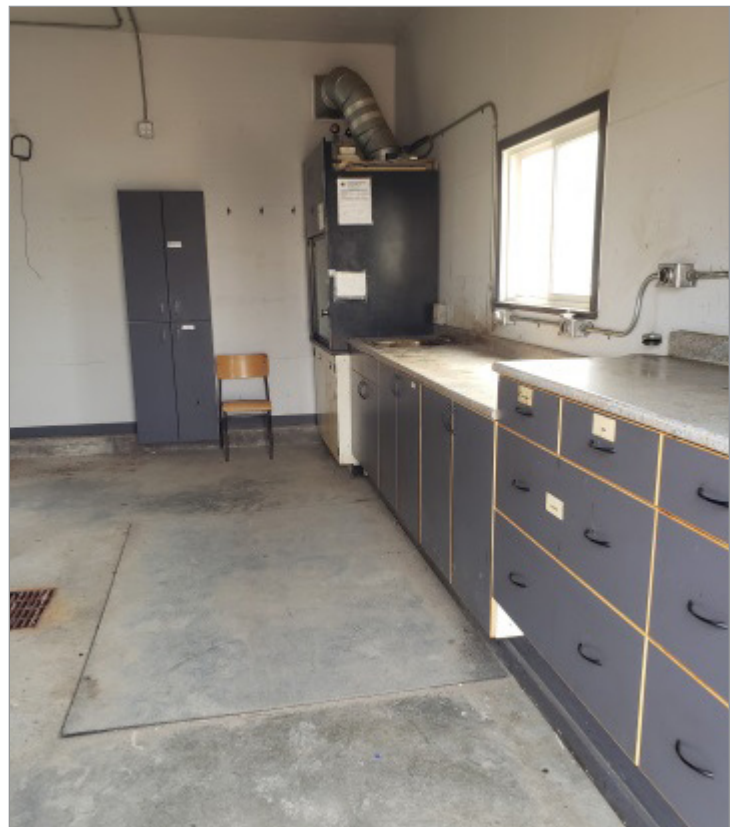
Royal LePage Solutions - Commercial Division #205, 264 Midpark Way SE Calgary, AB T2X 1J6

Not intended to solicit any party under a relevant contract. The information above is derived from sources believed reliable; however, no warranties or representations are being made regarding such information, including the potential income, costs, or profits associated with a property. Interested parties should consult a qualified professional for investment, financial or tax advice. All offices are independently owned and operated, except those offices marked as "Royal LePage Real Estate Services Ltd." Royal LePage is a registered trade-mark used under license. © 2012 Brookfield Real Estate Services Manager Limited

**INDUSTRIAL PROPERTY
FOR SALE**

4002 - 44 AVENUE, STETTLER, AB

**ROYAL LEPAGE
COMMERCIAL**



INDUSTRIAL PROPERTY FOR SALE

4002 - 44 AVENUE, STETTLER, AB

ROYAL LEPAGE
COMMERCIAL

