

4142 16 Street SE

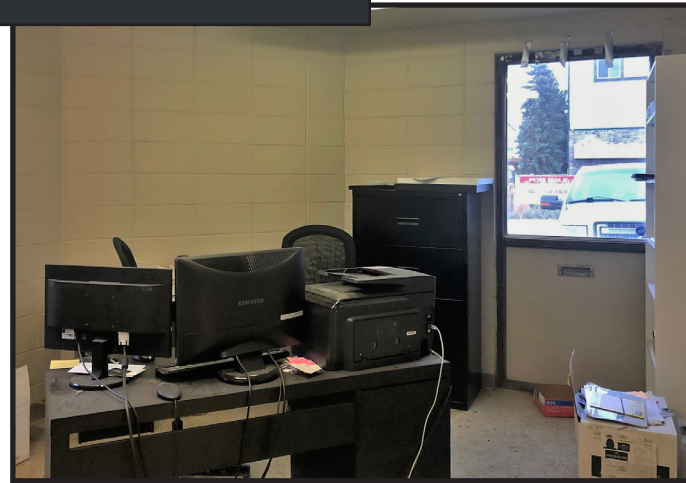


For SUBLEASE

Property Features

- Size:** 4,500 sq.ft.
- Loading:** 2 Drive-In Doors (12' x 14')
1 Dock Loading (8' x 8')
- Power:** 200 Amp
- Ceiling:** 18' clear
- Zoning:** I-R
- Features:** Sump
Make-Up Air Unit (6,000 CFM)
Upgraded LED Lighting
- Asking Rate:** \$10.75/sq.ft. from Oct 1 2020- Apr 30, 2021
\$11.00/sq.ft. from May 1, 2021- Apr 30, 2022
- Op Costs:** \$3.75/sq.ft.
- Location:** Easy access to Blackfoot Trail, Ogden Road and Deerfoot Trail

Ideal for automotive users and welders



CMS Real Estate Ltd.

#200, 136- 17 Ave NE Calgary, AB T2E 1L6
403-291-0425 www.cmsrealestateltd.com

Gerry Macdonald - Broker, CCIM
403-291-0425
gm@cmsrealestateltd.com

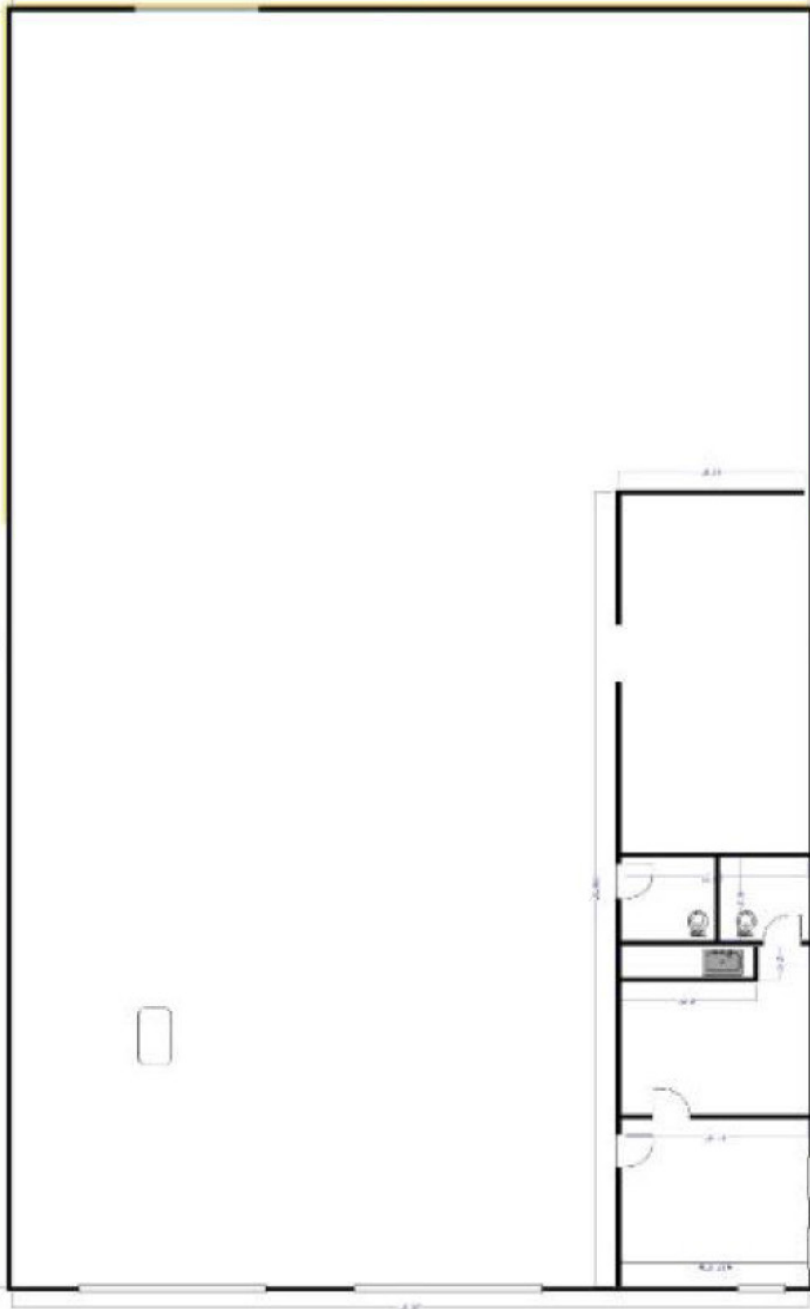
Gerry Macdonald Jr. - Associate Broker
403-219-0161
gmjr@cmsrealestateltd.com

Jessica Macdonald - Associate
403-219-0155
jessica@cmsrealestateltd.com

"The information contained herein is believed to be true but does not form part of any future contract. The property is subject to sale, withdrawal or price change without notice."
The information contained herein is based upon the information furnished by the principal sources, which we deem reliable - for which we cannot assume responsibility, but which we believe to be correct.

4142 16 Street SE

Main Floor Plan



CMS Real Estate Ltd.

#200, 136- 17 Ave NE Calgary, AB T2E 1L6
403-291-0425 www.cmsrealestateltd.com

Gerry Macdonald - Broker, CCIM
403-291-0425
gm@cmsrealestateltd.com

Gerry Macdonald Jr. - Associate Broker
403-219-0161
gmjr@cmsrealestateltd.com

Jessica Macdonald - Associate
403-219-0155
jessica@cmsrealestateltd.com

"The information contained herein is believed to be true but does not form part of any future contract. The property is subject to sale, withdrawal or price change without notice."
The information contained herein is based upon the information furnished by the principal sources, which we deem reliable - for which we cannot assume responsibility, but which we believe to be correct.