

160, 221 19 Street SE



For LEASE

Property Features

- Size:** 2,432 sq.ft.
- Office:** ± 1,498 sq.ft.
- Warehouse:** ± 934 sq.ft.
- Loading:** 1 Drive-In Door (12' x 15')- Electric
- Power:** 225 Amp
- Ceiling:** 25' (warehouse)
- Parking:** 4 Assigned Stalls and Visitor Parking

- Asking Rate:** \$12.50/sq.ft.
- Op Costs:** \$8.60/sq.ft.

Location: Mayland- Easy access to major roads such as Barlow Trail, Deerfoot Trail, 16 Avenue and Memorial Drive



CMS Real Estate Ltd.

#200, 136- 17 Ave NE Calgary, AB T2E 1L6
403-291-0425 www.cmsrealestateltd.com



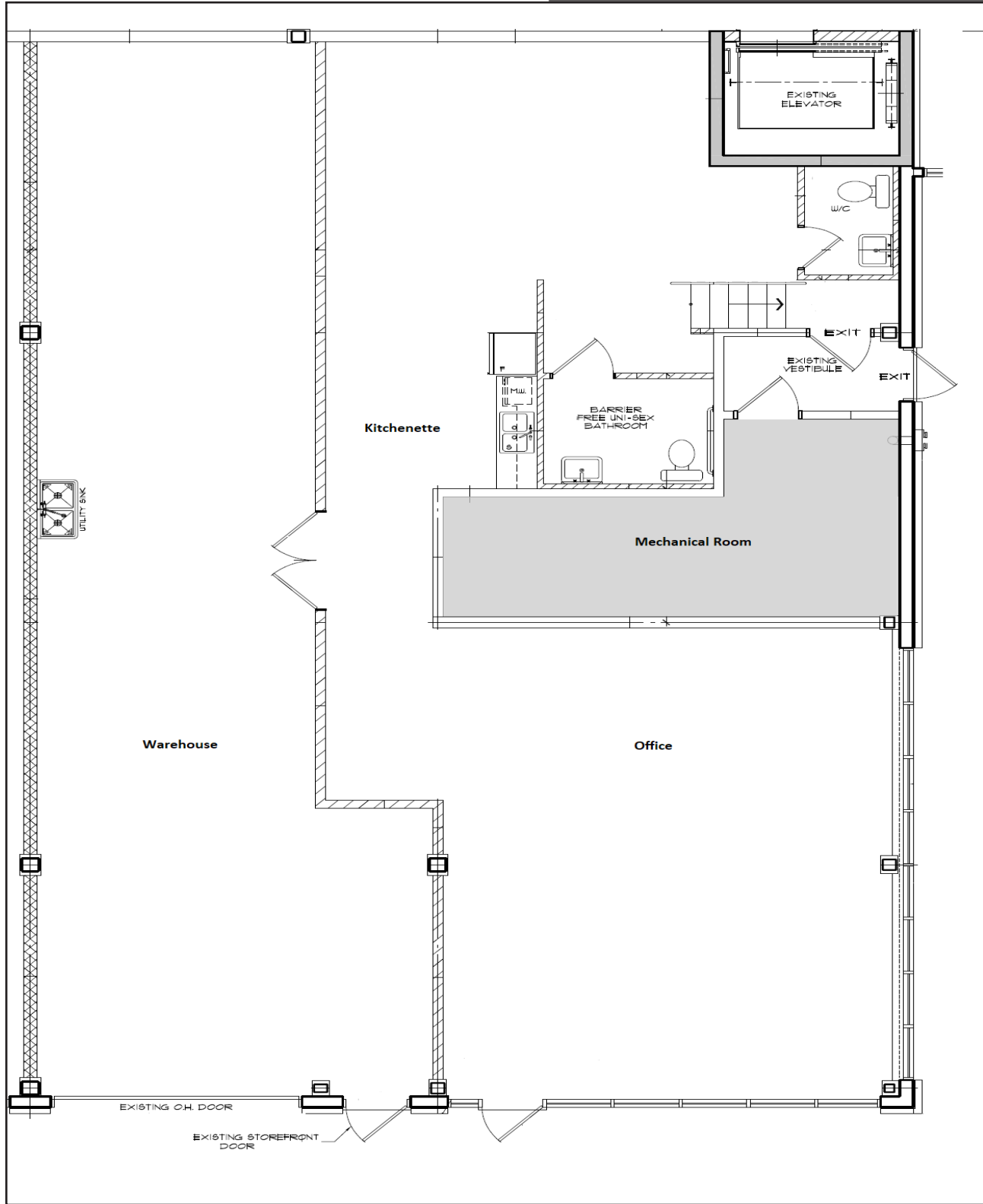
Gerry Macdonald - Broker, CCIM
403-291-0425
gm@cmsrealestateltd.com

Gerry Macdonald Jr. - Associate Broker
403-219-0161
gmjr@cmsrealestateltd.com

Jessica Macdonald - Associate
403-219-0155
jessica@cmsrealestateltd.com

"The information contained herein is believed to be true but does not form part of any future contract. The property is subject to sale, withdrawal or price change without notice." The information contained herein is based upon the information furnished by the principal sources, which we deem reliable - for which we cannot assume responsibility, but which we believe to be correct.

FLOOR PLAN



CMS Real Estate Ltd.

#200, 136- 17 Ave NE Calgary, AB T2E 1L6
403-291-0425 www.cmsrealestateltd.com

Gerry Macdonald - Broker, CCIM
403-291-0425
gm@cmsrealestateltd.com

Gerry Macdonald Jr. - Associate Broker
403-219-0161
gmjr@cmsrealestateltd.com

Jessica Macdonald - Associate
403-219-0155
jessica@cmsrealestateltd.com

"The information contained herein is believed to be true but does not form part of any future contract. The property is subject to sale, withdrawal or price change without notice."
The information contained herein is based upon the information furnished by the principal sources, which we deem reliable - for which we cannot assume responsibility, but which we believe to be correct.